



www.anatol.com

# VULCAN

A New Level of Efficiency

## Dependable and Versatile

- Cures all ink types with speed and consistency
- Unprecedented reliability
- Reduces gas consumption up to 25% compared to other major brands

## Easy to Use

- Intuitive touchscreen operating system features micro-processor with digital control capability
- Save and recall most frequently used settings

## Available in over 20 configurations:

- Models available from 36" belt width/6' heat chamber up to 72" belt width/20' heat chamber





### Design and Construction

- Design provides a consistent and uniform temperature throughout the drying chamber
- Air-cooled cabinet located outside of heat module ensures a long life for all electrical components
- Improved design allows for easy maintenance and lower operating costs
- Convenient viewing window allows you to easily monitor the status of the burner visually.
- Heat-resistant stainless steel filter folds during removal for cleaning, saving space around the dryer.
- Removable access panels make it easy to clean and service the interior of the dryer.
- Heat resistant steel burner is durable to high temperatures.
- The burner is located on the side of the dryer which facilitates easy access.



Optional split belt



### Air Handling

- 14" blower with variable speed controller for improved curing and reduced energy costs
- Optimized airflow with improved spacing of forward-curved blades – exchanges air inside of dryer chamber 10-12 times every minute.
- Double-wall stainless steel filter allows for maximum flow and less maintenance
- Fresh air feed fan
- Three independent blowers: combustion, chamber air-circulation and exhaust.



### Conveyor System

- Digital belt speed readout
- Large rollers are crowned for better conveyor belt tracking
- Adjustable speed from a few feet up to 37.5 feet per minute
- Optional split belt on models with 48"+ belt widths

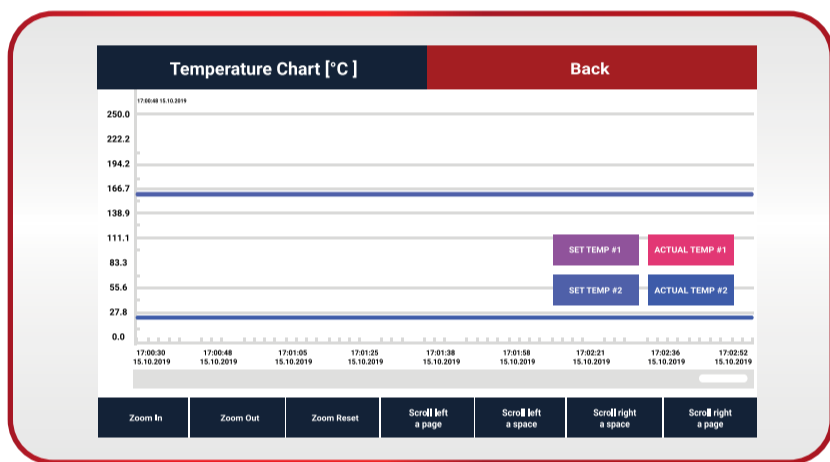


## Energy Efficiency

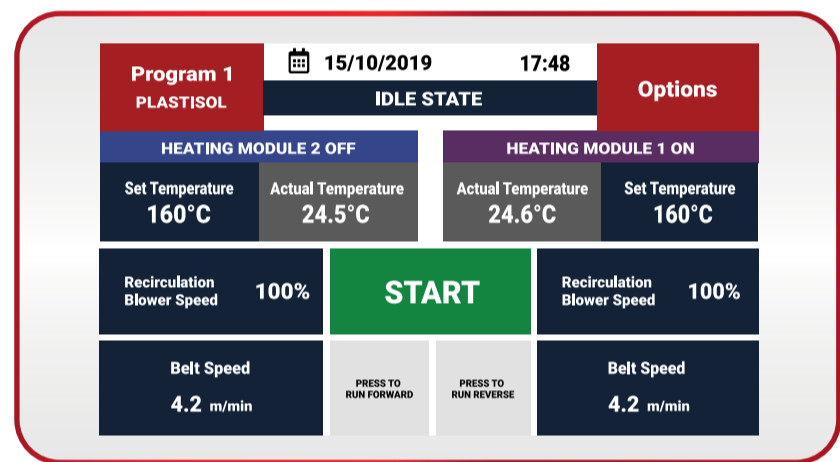
- Heavy-duty thermal insulation prevents heat from migrating into the workplace
- Integrated hood prevents hot air from escaping

## Heat Chamber

- Available for natural gas (NG) or liquid propane (LP)
- Double wall construction with galvanized steel interior



Tracks dryer temperature and substrate temperature in real time



Color touchscreen control display

## Control Center

- Automatic shutdown sequence keeps the blower and belt running until the chamber cools
- Fuzzy-logic digital controller ensures consistency by keeping within 1 degree of target temperature
- A visible and audible warning is activated by an indicator light and buzzer when temperature is not within user-set parameters
- Touchscreen displays key operational information about heat chamber temperature, belt speed and other settings
- Programmable to retain 9 separate job settings
- Program a schedule for the dryer to start up and shut down automatically at specified times on given days of week
- View temperature plots to track temperature changes in real time



## SPECIFICATIONS

Model #	Width	Height	Belt Width	Heat Chamber Length	Overall Length	Smoke Hood Length	Standard Infeed/Outfeed Length	Nominal Gas Input Pressure	Electrical Requirements	Exhaust Diameter	Maximum Burner Capacity
VUL-36-06	5'2" 156cm	6'7" 198cm	36" 92cm	6'0" 183cm	17'0" 520cm	1'0" 30cm	5'0"/5'0" 150cm/150cm	6" W.C. 15cm W.C.	1 Ph, 208-240VAC, 3.57kW, 15A  3 Ph, 208-240VAC, 3.57kW, 9A  3 Ph, 380-400VAC, 3.57kW, 7A	10" 25cm	370,000 BTU
VUL-36-8.5				8'6" 259cm	19'6" 590cm						
VUL-36-10				10'0" 305cm	21'0" 640cm						
VUL-36-12				12'0" 366cm	23'0" 700cm						
VUL-48-06	6'7" 186cm	6'7" 198cm	48" 122cm	6'0" 183cm	17'0" 520cm	2'6" 76cm					
VUL-48-8.5				8'6" 259cm	19'6" 590cm						
VUL-48-10				10'0" 305cm	21'0" 640cm						
VUL-48-12 MODULAR				12'0" 366cm	22'6" 680cm						
VUL-48-16 MODULAR				16'0" 488cm	26'6" 800cm						
VUL-60-10	7'6" 231cm	6'7" 198cm	60" 152cm	10'0" 305cm	21'0" 640cm	1'0" 30cm					
VUL-60-12 MODULAR				12'0" 366cm	22'6" 680cm						
VUL-60-16 MODULAR				16'0" 488cm	26'6" 800cm	2'6" 76cm					
VUL-60-20 MODULAR				20'0" 609cm	30'6" 920cm						
VUL-72-10 MODULAR	8'2" 251cm	6'7" 198cm	72" 182cm	10'0" 305cm	21'0" 640cm	1'0" 30cm					
VUL-72-12 MODULAR				12'0" 366cm	22'6" 680cm						
VUL-72-16 MODULAR				16'0" 488cm	26'6" 800cm	2'6" 76cm					
VUL-72-20 MODULAR				20'0" 609cm	30'6" 920cm						

Model #	Width	Height	Belt Width	Heat Chamber Length	Overall Length	Smoke Hood Length	Standard Infeed/Outfeed Length	Nominal Gas Input Pressure	Electrical Requirements	Exhaust Diameter	Maximum Burner Capacity
VUL-60-24 HIGH OUTPUT	7'6" 231cm	6'7" 198cm	60" 152cm	24'0" 732cm	34'5" 1590cm	2'6" 76cm	5'0"/5'0" 150cm/150cm	6" W.C. 15cm W.C.	1 Ph, 208-240VAC, 6.81kW, 28A	2x10" 2x25cm	2 x 370,000 BTU
VUL-60-28 HIGH OUTPUT				28'0" 854cm	38'5" 1712cm						
VUL-60-32 HIGH OUTPUT				32'0" 975cm	42'5" 1834cm						
VUL-60-36 HIGH OUTPUT				36'0" 1098cm	46'5" 1956cm						
VUL-72-24 HIGH OUTPUT	8'2" 251cm	6'7" 198cm	72" 182cm	24'0" 732cm	34'5" 1590cm	2'6" 76cm					
VUL-72-28 HIGH OUTPUT				28'0" 854cm	38'5" 1712cm						
VUL-72-32 HIGH OUTPUT				32'0" 975cm	42'5" 1834cm						
VUL-72-36 HIGH OUTPUT				36'0" 1098cm	46'5" 1956cm						

### Two-Year Limited Warranty

Every effort has been made to ensure the accuracy of the promotional information included in this brochure. Specifications are subject to change. Anatol Equipment Manufacturing Co. and its subsidiaries, if any, expressly disclaim any liability for damages, consequential or incidental, resulting from the purchase, transportation, installation, or use of any products based upon information contained within this brochure. Any rights or remedies are limited solely to those provided in writing by Anatol Equipment Manufacturing Co. at the time of sale.