



www.anatol.com

QUIK-KOTE MINI

Automatic Emulsion Coating Machine

**Shorten your screen
prep time and coat
more consistently
for higher quality prints**

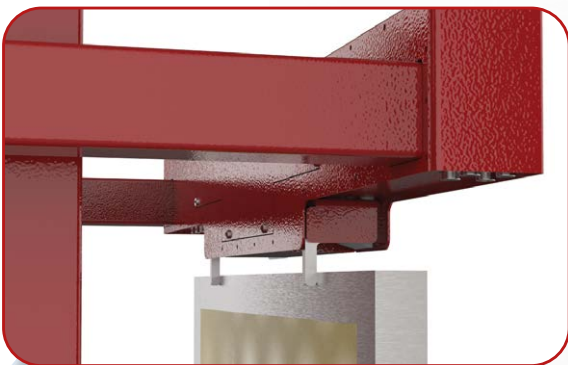
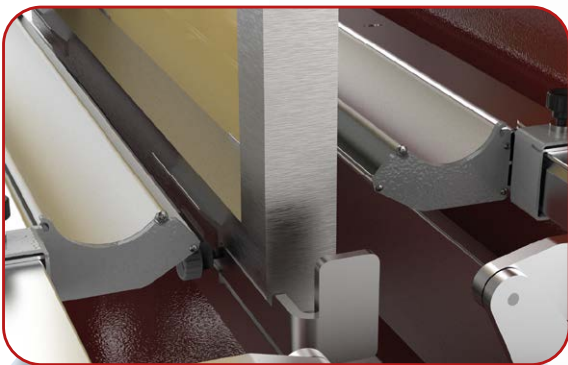
Anatol's Quik-Kote mini automatic emulsion coating machine takes the work out of coating screens and allows you to coat more consistently than ever, improving your print quality. The scoop coaters are lifted with servo motors, ensuring a smooth, even coating of emulsion to create stencils of uniform thickness. Lay down more consistent ink deposits than you can by coating manually, resulting in higher quality prints.



QUIK-KOTE MINI

Heavy-Duty Construction

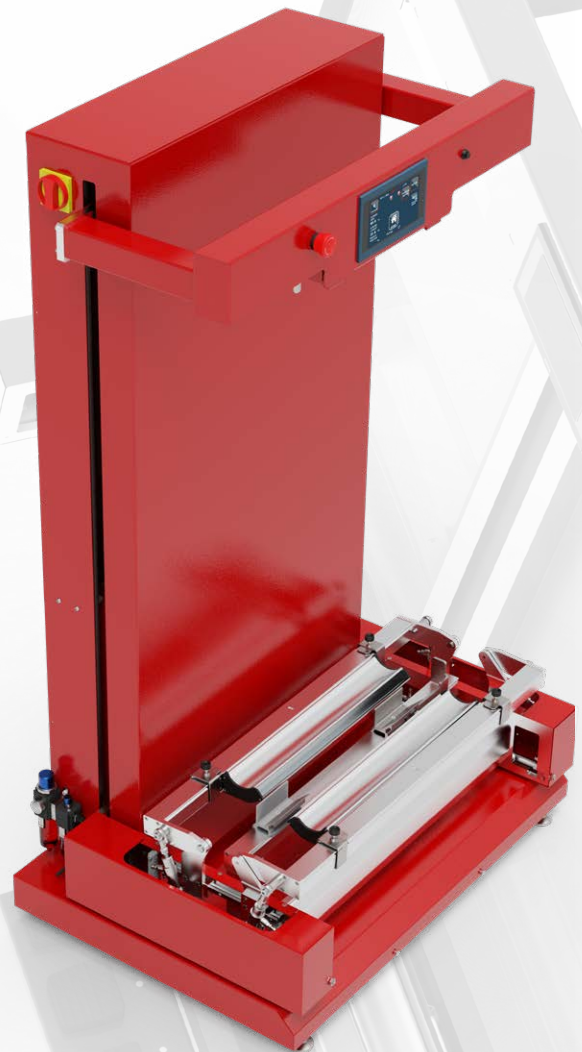
- High quality pneumatic cylinders with automatic braking ensure smooth and accurate movement for consistent operation and even coating
- Scoop coaters are lifted with servo motors for smooth, precise and reliable operation
- Aluminum scoop coaters feature unique easy-to-clean design
- High quality, durable steel screen locks are adjustable for a variety of different screen frame sizes and thicknesses to ensure a firm hold and even emulsion coating
- A more compact footprint saves space in your shop



Screen holders are adjustable to accommodate a wide variety of frame sizes and thicknesses

Fast, Consistent Operation

- Quick, even and consistent automatic coating at an affordable price point
- Increase productivity and shorten screen prep times by coating both sides of the screen simultaneously
- Uniform scoop coater pressure ensures a smooth, even coating of emulsion on the screen
- Automatic adjustment of the top beam



AUTOMATIC EMULSION COATING MACHINE



Compatible Screens

- Holds one screen at a time
- Compatible with screen frame sizes of 18"x19" up to 30"x45"



Intuitive Control Interface

- Easy-to-use 7" touchscreen control panel with intuitive software gives you full control over the machine
- Save and recall up to 15 different programs

DIMENSIONS	WEIGHT	AIR REQUIREMENTS	AIR PRESSURE	ELECTRICAL REQUIREMENTS
67.3" x 39.4" x 28" (171cm x 100cm x 71.1cm)	460lb (210kg)	0.56 CFM (16 l/min) @60PSI	58 PSI (4 bar)	1ph, 208-240V, 50/60Hz, 4A Max Power: 850W

COMPATIBLE SCREEN SIZE
One screen: 18" x 19" up to 30" x 45" (45.7cm x 48.2cm up to 76,2cm x 114.3cm)

COMPATIBLE SCREEN FRAME THICKNESS
0.75" x 0.75" up to 2" x 2" (2cm x 2cm up to 5.1cm x 5.1cm)



User-friendly touchscreen control panel



Uniform scoop coater pressure ensures a smooth, even coating of emulsion on the screen

Two-Year Limited Warranty

Every effort has been made to ensure the accuracy of the promotional information included in this brochure. Specifications are subject to change. Anatol Equipment Manufacturing Co. and its subsidiaries, if any, expressly disclaim any liability for damages, consequential or incidental, resulting from the purchase, transportation, installation, or use of any products based upon information contained within this brochure. Any rights or remedies are limited solely to those provided in writing by Anatol Equipment Manufacturing Co. at the time of sale.